

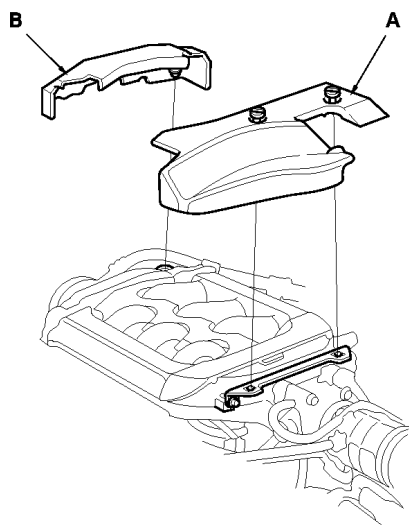
2000 ACCORD - Engine Removal

Special Tool Required

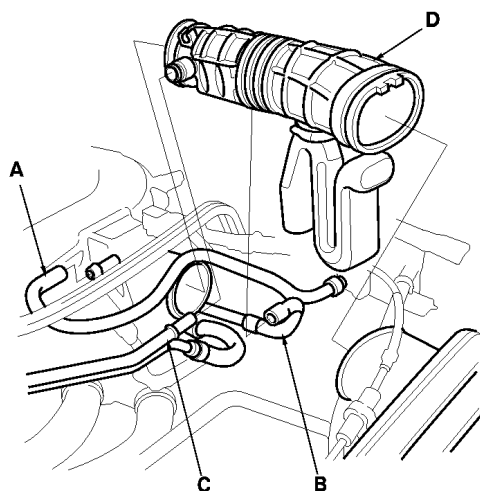
- Belt Tension Release Arm, YA 9317, commercially available

NOTE:

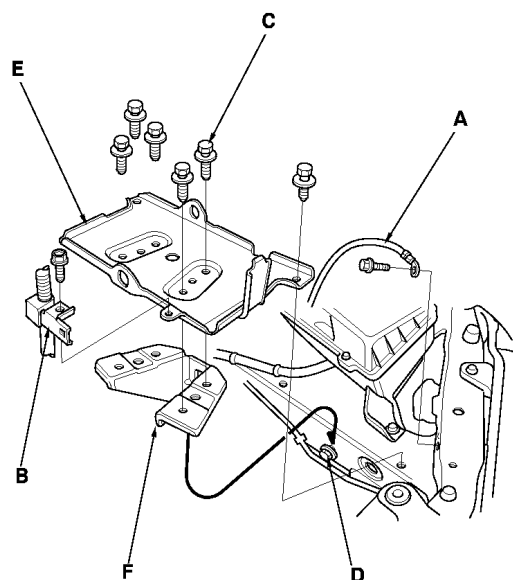
- Use fender covers to avoid damaging painted surfaces.
 - To avoid damage, unplug the wiring connectors carefully while holding the connector portion.
 - Mark all wiring and hoses to avoid misconnection. Also, be sure that they do not contact other wiring or hoses, or interfere with other parts.
1. Remove the support struts from the hood, then fix the hood in a vertical position.
 2. Make sure you have the anti-theft code for the radio, then write down the frequencies for the radio's preset buttons.
 3. Disconnect the battery negative terminal first, then the positive terminal. Remove the battery.
 4. Remove the throttle body cover (A) and intake manifold cover (B).



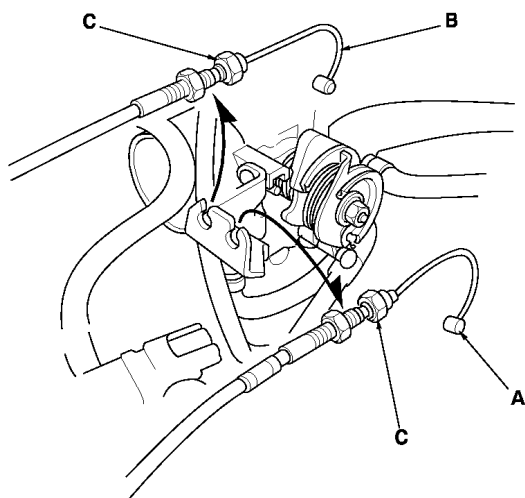
5. Remove the Evaporative Emission (EVAP) canister hose (A) from the throttle body.
6. Remove the vacuum hose (B) and breather pipe (C), then remove the intake air duct (D).



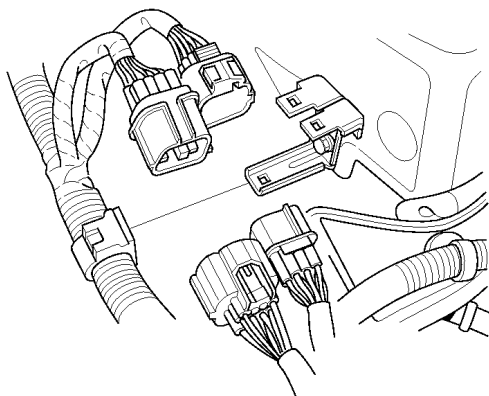
7. Remove the ground cable (A) and harness clamp (B).
8. Remove 6 mounting bolts (C), and loosen the mounting bolt (D), then remove the battery base (E) and battery base bracket (F).



9. Remove the throttle cable (A) and cruise control cable (B) by loosening the locknuts (C), then slip the cable ends out of the accelerator linkage. Take care not to bend the cables when removing them. Always replace any kinked cable with a new one.

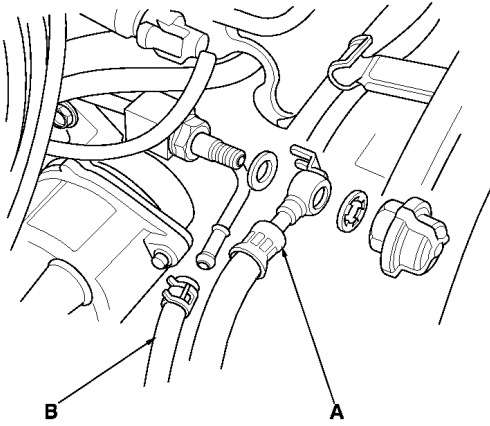


10. Disconnect the engine wire harness connectors on the left side of the engine compartment.

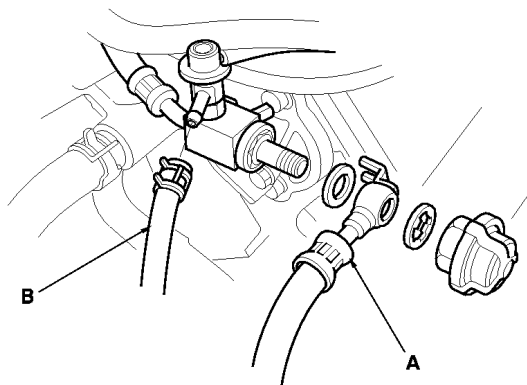


11. Relieve fuel pressure.
12. Remove the fuel feed hose (A) and fuel return hose (B).

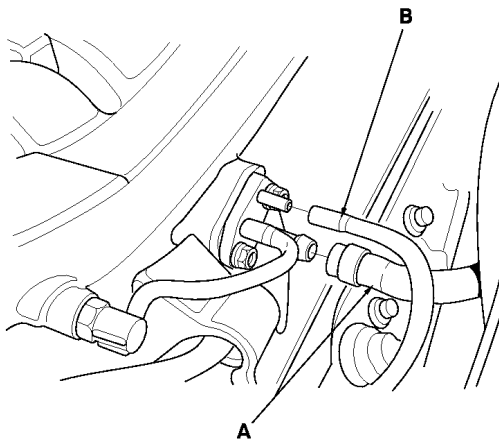
'98-99 models:



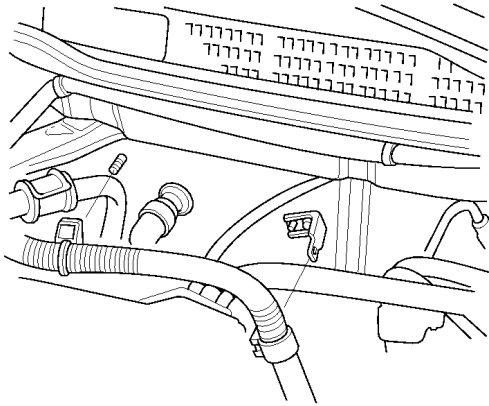
'00-02 models:



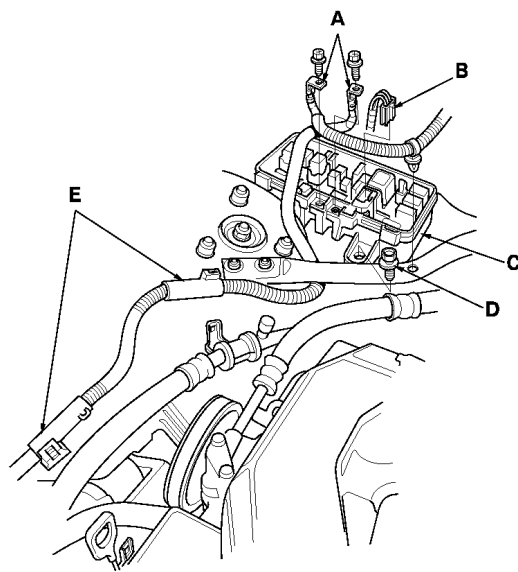
13. Remove the brake booster vacuum hose (A) and the cruise control vacuum hose (B).



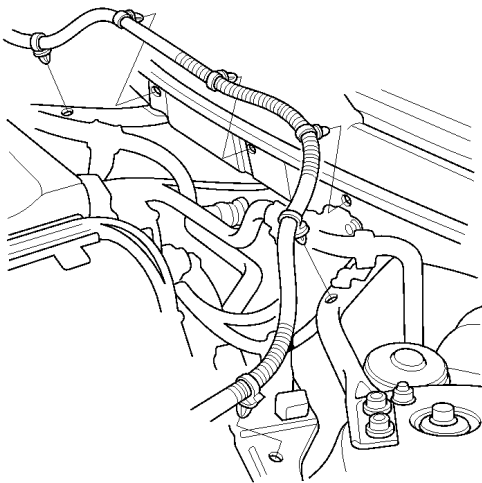
14. Remove the engine wire harness clamps.



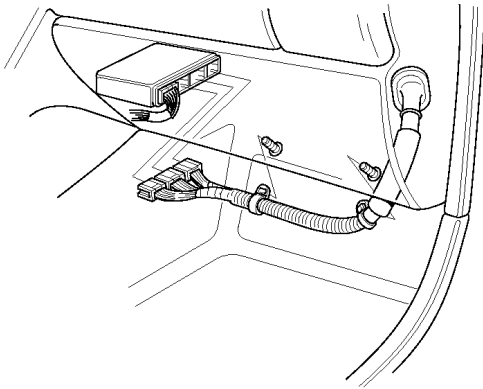
15. Remove the battery cables (A), and disconnect the connector (B) from the under-hood fuse/relay box (C).
16. Remove the flange bolt (D), then remove the under-hood fuse/relay box.
17. Remove the harness clamps (E).



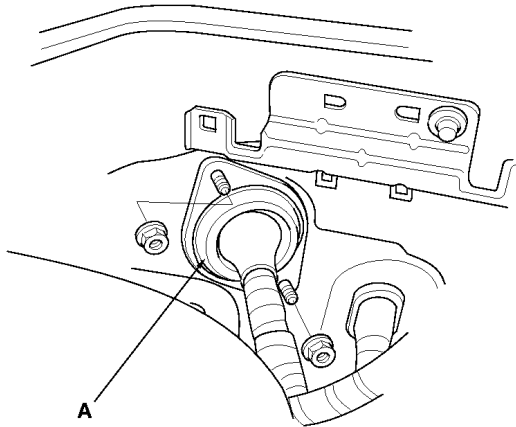
18. Remove the starter cable clamps.



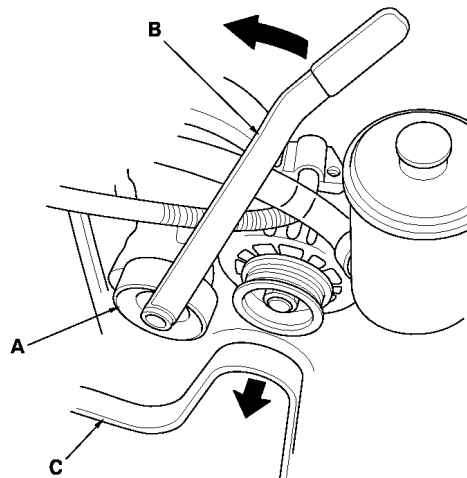
19. Disconnect the connectors from the Powertrain Control Module (PCM).



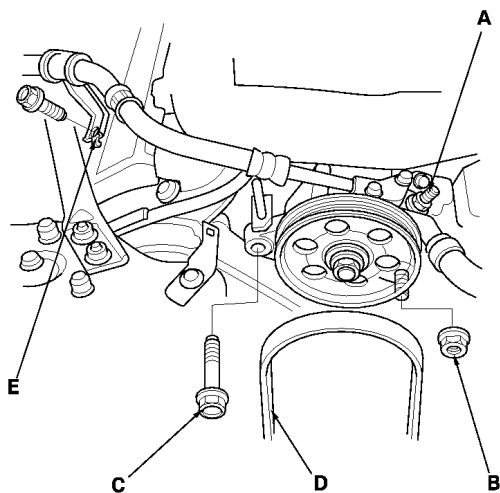
20. Remove the grommet (A), then pull out the PCM connectors.



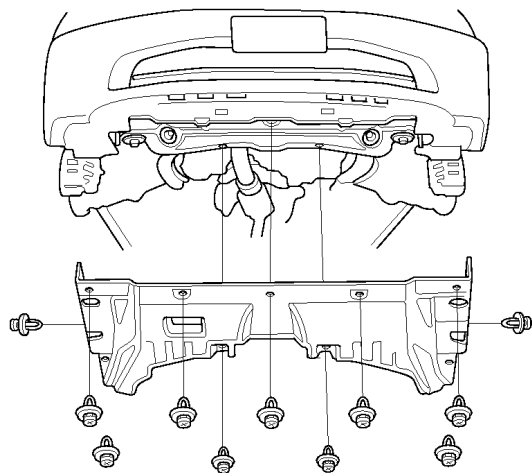
21. Move the auto-tensioner (A) with the belt tension release arm (B) to remove tension from the alternator belt (C), then remove the alternator belt.



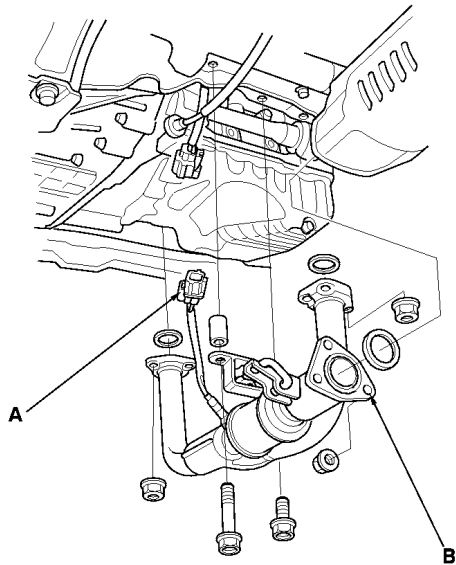
22. Loosen the adjusting nut (A), and remove the locknut (B) and mounting bolt (C), then remove the Power Steering (P/S) pump belt (D) and pump without disconnecting the P/S hoses.
23. Remove the P/S hose clamp (E).



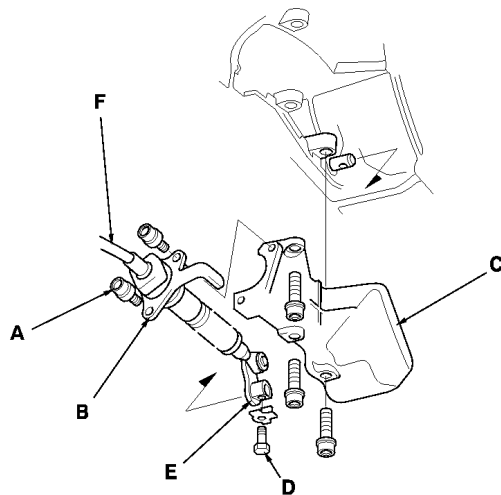
24. Remove the radiator cap.
25. Make sure the hoist brackets are positioned properly. Raise the hoist to full height.
26. Remove the front tires/wheels.
27. Remove the splash shield.



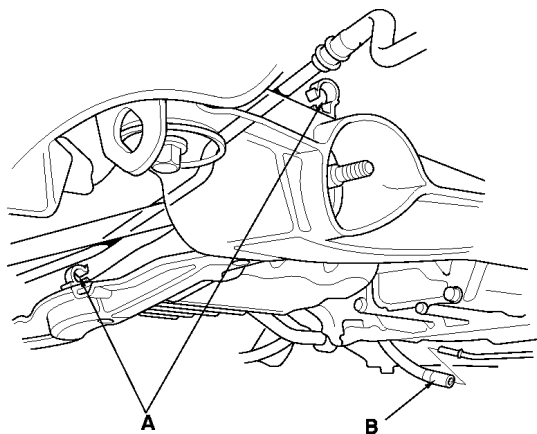
28. Loosen the drain plug in the radiator, to drain the engine coolant.
29. Drain the Automatic Transmission Fluid (ATF). Reinstall the drain plug using a new washer.
30. Drain the engine oil. Reinstall the drain bolt using a new washer.
31. Disconnect the Primary Heated Oxygen Sensor connector (A), then remove the exhaust pipe A (B).



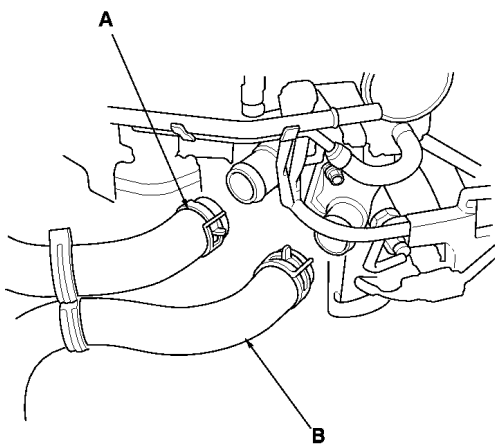
32. Remove the damper fork.
33. Disconnect the suspension lower arm ball joints.
34. Remove the driveshafts. Coat all precision-finished surfaces with clean engine oil. Tie plastic bags over the driveshaft ends.
35. Remove the bolts (A) securing the shift cable holder (B), then remove the shift cable cover (C). To prevent damage to the control lever joint, be sure to remove the bolts securing the shift cable holder before removing the bolts securing the shift cable cover.
36. Remove the lock bolt (D) securing the control lever (E), then remove the shift cable (F) with the control lever. Take care not to bend the shift cable while removing it.



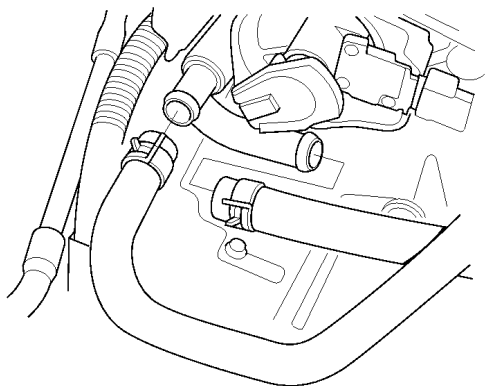
37. Unplug the P/S hose clamps (A), and disconnect the engine mount control vacuum hose (B).



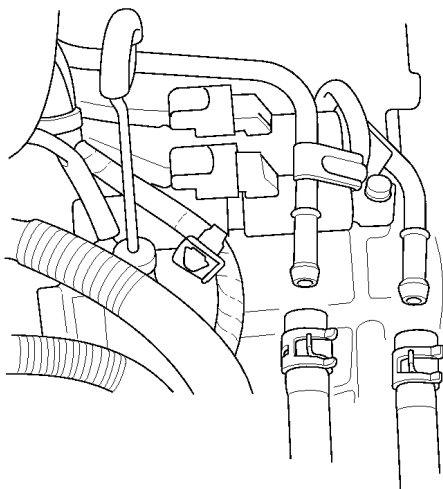
38. Lower the hoist, then remove the upper radiator hose (A), and the lower radiator hose (B).



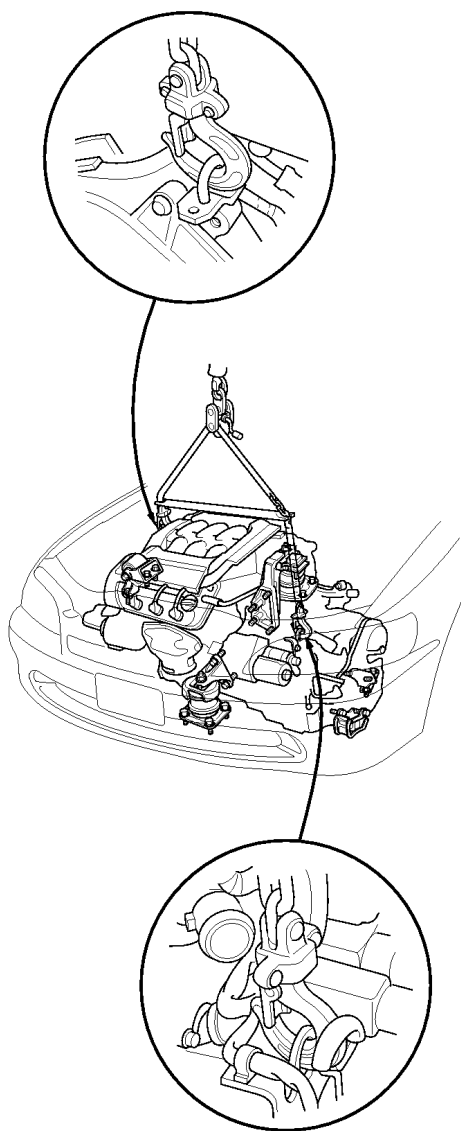
39. Remove the distributor cap, then remove the heater hoses.



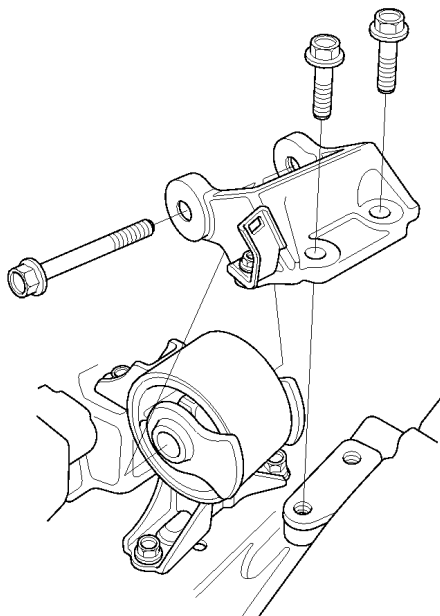
40. Remove the Automatic Transmission Fluid (ATF) cooler hoses, then plug the ATF cooler hoses and lines.



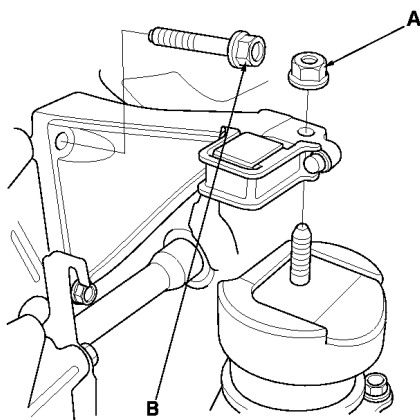
41. Attach the chain hoist to the engine as shown.



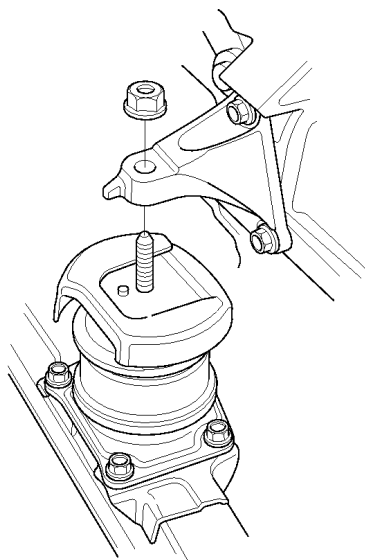
42. Remove the side engine mount bracket.



43. Remove the rear mount bracket support nut (A) and mounting bolt (B).

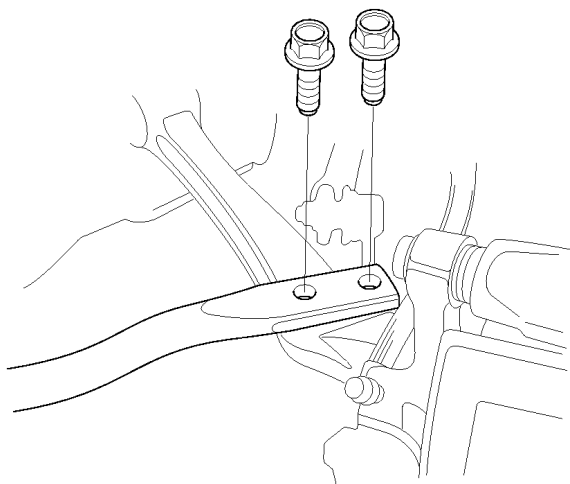


44. Remove the front mount bracket support nut.

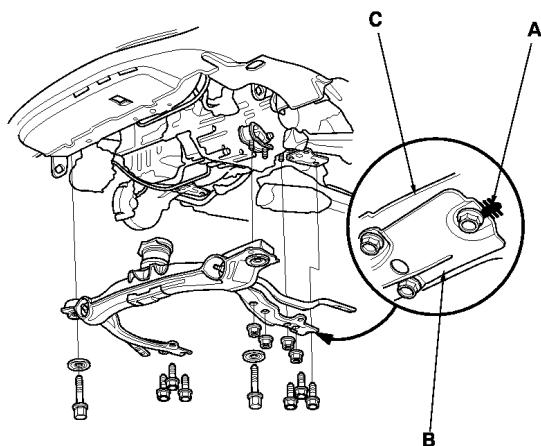


45. Make sure the hoist brackets are positioned properly. Raise the hoist to full height.

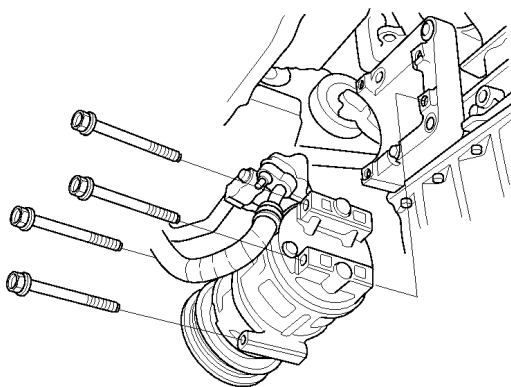
46. Remove the flange bolts securing the radius rods.



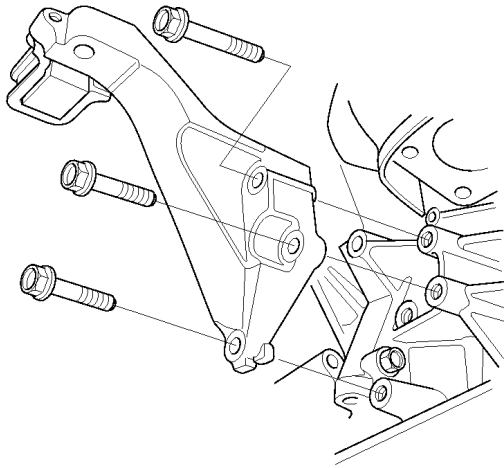
47. Make a mark (A) on the front beam (B) and rear beam (C), then remove the front beam.



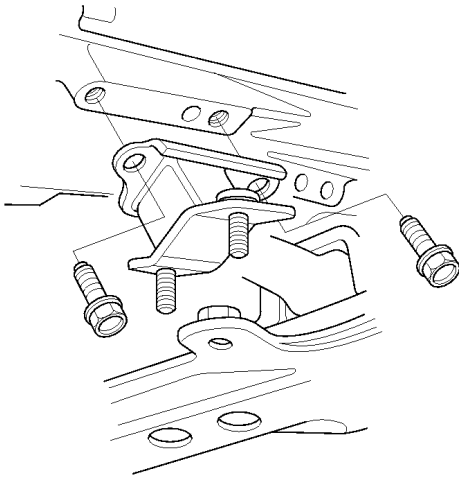
48. Remove the A/C compressor without disconnecting the A/C hoses.



49. Remove the rear mount.



50. Remove the transmission lower rear mount.



51. Check that the engine/transmission is completely free of vacuum hoses, fuel and coolant hoses and electrical wiring.
52. Slowly lower the engine about 150 mm (6 in.). Check once again that all hoses and wires are disconnected from the engine/transmission.
53. Lower the engine all the way, and disconnect the chain hoist from the engine.
54. Remove the engine from under the vehicle.